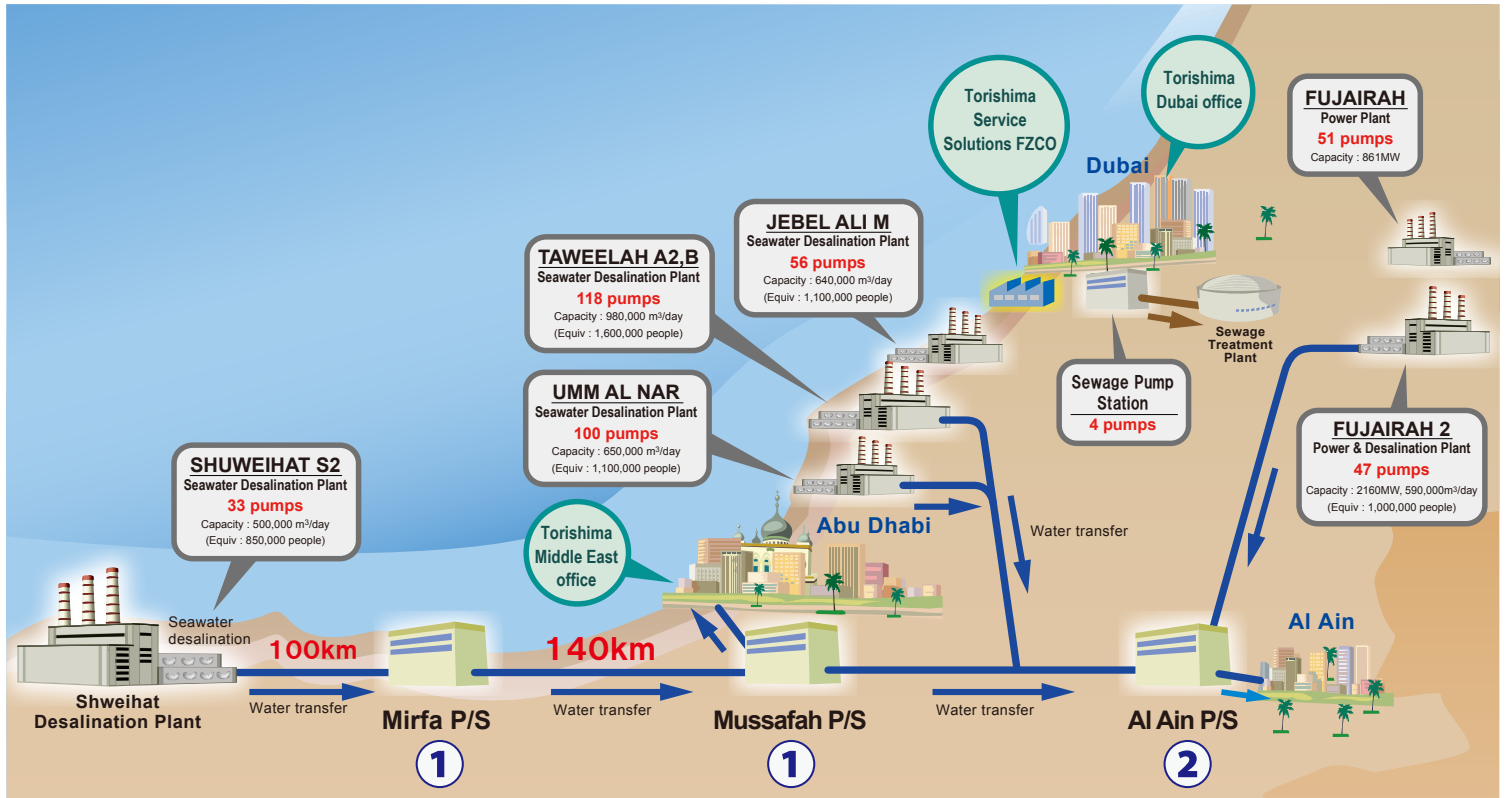




United Arab Emirates



① Shuweihat Potable Water Transmission Project (2005)

This vast project is designed to provide fresh water produced by the Shuweihat Desalination Plant — located in the western region of the U.A.E. — to the suburbs of the city of Abu Dhabi, about 240 kilometers distance away. Torishima undertook the design, fabrication and full trial run of the machinery, electricity, and instrumentation in addition to the control facility of the two pumping stations.



Mirfa Pumping Station

The Shuweihat Desalination Plant pumps a massive amount of water — up to 550,000 metric tons per day to serve about 900,000 people — to the Mirfa Pump Station. This pump station then transfers this water to the Mussafah Pump Station located about 140 km distance away.

Drinking Water Long Distance
Water Supply Pumps
4,735m³/h - 250m - 4,700kW - 5units

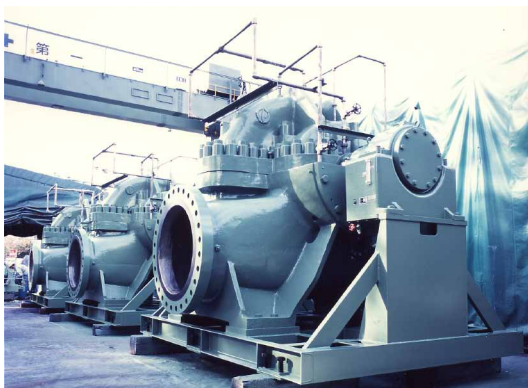


Mussafah Pumping Station

This station distributes the water fed from the Shuweihat Desalination Plant via the Mirfa Pump Station to the existing water distribution network.

Water Supply Pumps
2,840m³/h - 65m - 690kW - 5units

② Al Ain Project (2011)



Al Ain Pumping Station

Torishima received the EPC (Engineering, Procurement and Construction) contract work for a domestic water supply pump station to be constructed near the Oman border in Al Ain, about 130 km away from the city of Abu Dhabi. This pump station supplies one million metric tons per day of domestic water to a reservoir for the city of Al Ain at a maximum elevation differential of 110 meters.

The scope of this construction project encompasses mainly civil engineering; building construction; supply of machinery, electricity and a remote control monitoring system; pipe-laying along a total length of approximately 8 km; and laying of approximately 30 km of 33-kV underground service line cable within the pump station.

When completed, this pump station will supply a water network linking the four Seawater Desalination Plants located in Taweelah, Umm Al Nar, Shuweihat and Fujairah.

Water Supply Pumps
9,658.8m³/h - 185m - 4,700kW - 8units