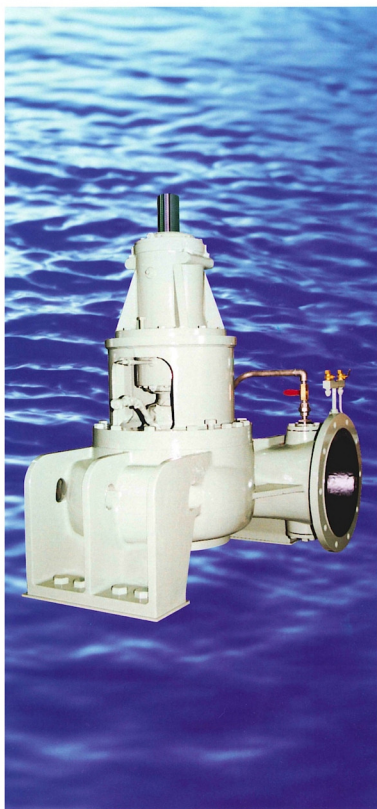


CFV

Vertical Volute Casing Pumps



TORISHIMA PUMP

CFV Vertical Volute Casing Pumps

Introduction

TORISHIMA CFV vertical volute casing pumps are from 200mm to 3000mm size pumps that are best suited for mainly relay pumps in sewage treatment system.

Applications

- **Sewerage** : Rain water drainage, Sewage transfer
- **Water works** : Water intake, Boosting, Distribution
- **Agriculture** : Irrigation and Drainage

Operating Range

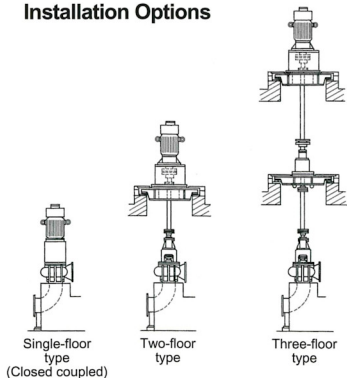
Total head 5 to 120m (16 to 390ft)
 Capacity 180 to 72,000m³/h (790 to 317,000U.S.gpm)
 Size 200 to 3000mm (8 to 120")

(In addition to the above operating range, special
 and larger to size pumps are also available)

Feature

1. Solids handling design to prevent clogging of the pump casing and impeller.
2. Ease of Maintenance
 The rotating assembly can be withdrawn from the casing without disconnecting the pipings.
3. Vertical type saves the installation space.
4. Flexible installation single-floor type, two and three-floor type installations available.

Installation Options



Sewage pumps (size : 450mm), Japan



Intake pumps in city water plant (size : 800m), Hong Kong



Sewage pumps (size : 1300 × 1100mm), Hong Kong



Fabricating volute casing of 3000mm size drainage pump, Japan

Best Suited Design for Sewage

Bearings

- Grease lubricated ball bearings
- Axial thrust is supported by pump
- Optional bearing arrangements are available to large applications

Volute casing

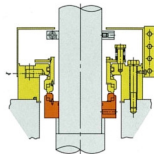
- The casing supported by rigid pump feet
- Provided with an inspection window to ease internal inspection

Impeller nut

Impeller nut is profiled to match the inlet flow conditions. Therefore the risk of clogging with stringy material is minimal.

Shaft seal options

- Gland packing
 - Mechanical seal option
- Non flushing mechanical seal**
Because of the self-lubricating feature, external water source is unnecessary. When the pump has to be operated for a long time, the amount of water for lubrication can be saved tremendously.

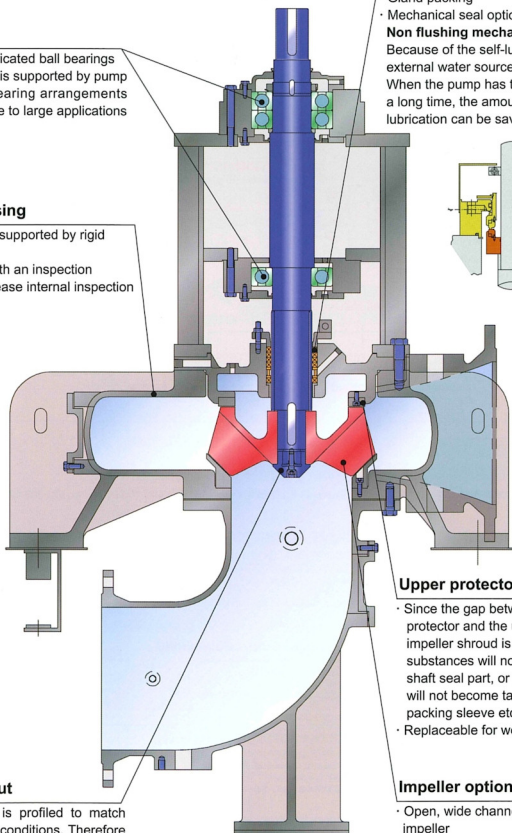


Upper protector

- Since the gap between the upper protector and the upper part of the impeller shroud is small, foreign substances will not impinge on the shaft seal part, or string-like ones will not become tangled up with the packing sleeve etc.
- Replaceable for wearing

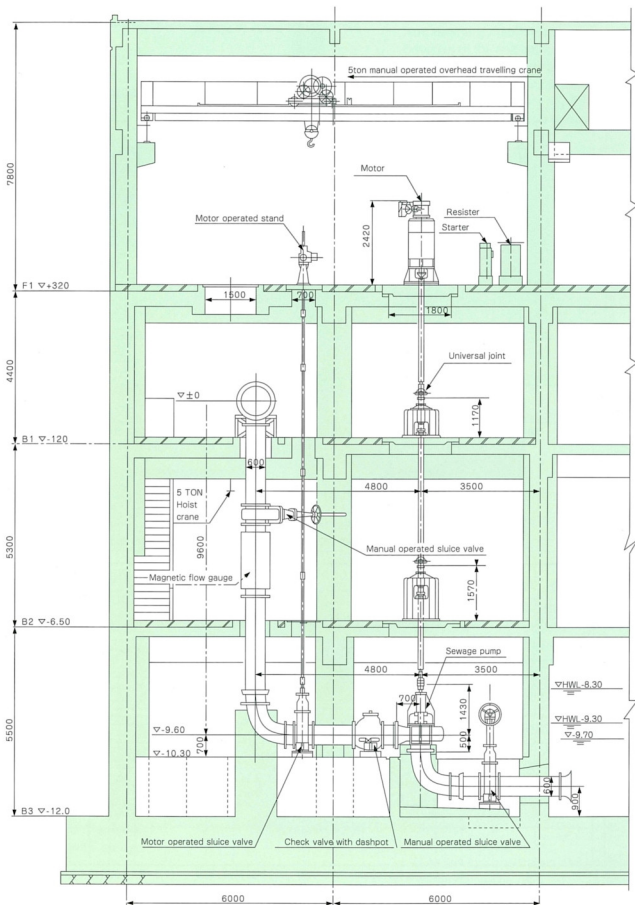
Impeller options

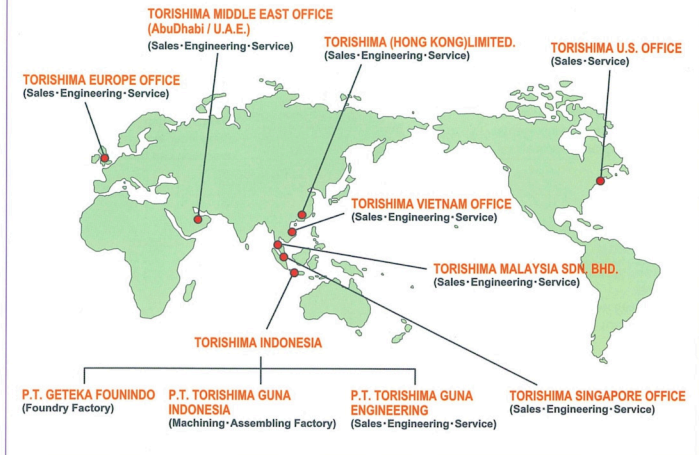
- Open, wide channel, non-clogging impeller
 - Closed impeller option
- For sewage application, the number of vanes can be reduced according to the condition of sewage



Example of Installation

■ Four-Floor Type Installation size : 6000mm





TORISHIMA PUMP MFG.CO.,LTD.

Head Office & Works: 1-1-8, Miyata-cho, Takatsuki City, Osaka, Japan. Phone: 072-695-0551 Fax: 072-693-1288

TORISHIMA HONG KONG

TORISHIMA (HONG KONG) LIMITED
Unit 605, 6/F., Tower 11, Enterprise Square,
9 Sheung Yuet Road, Kowloon Bay,
Kowloon, Hong Kong
Phone: (852)2795-1838 Fax: (852)2754-3293

TORISHIMA INDONESIA

P.T. TORISHIMA GUNA INDONESIA
Jalan Rawa Sumur Timur No.1, Pulogadung
Industrial Estate, P.O Box.:1160,
Jakarta Indonesia
Phone: (62)021-460-3963 Fax:(62)021-460-3937

TORISHIMA U.A.E.

MIDDLE EAST OFFICE
5th Floor, office No.503, Al Salmeen
Golden Tower, P.O Box.:72197,
Electra Street, Abu Dhabi. U.A.E.
Phone: (971)2-6743880 Fax:(971)2-6743881

TORISHIMA VIETNAM

VIETNAM OFFICE
No.76 Bui Thi Xuan Street, Hai Ba Trung
District, Hanoi, Socialist Republic of Vietnam
Phone: (84)4-943-7880 Fax: (84)4-943-7876

P.T. TORISHIMA GUNA ENGINEERING

Jalan Rawa Sumur Timur No.1, Pulogadung
Industrial Estate, P.O Box 1160
Jakarta Indonesia
Phone: (62)021-460-3963 Fax:(62)021-460-3937

TORISHIMA U.K.

EUROPE OFFICE
Sunnyside Works, Gartsherrie Rd
Coatbridge, Scotland ML5 2DL
Phone: (44)1236 441630 Fax:(44)1236 702875

TORISHIMA SINGAPORE SINGAPORE OFFICE

30 Ubi Crescent #01-02 Ubi Techpark
Singapore 408566
Phone: (65)6779-0123 Fax: (65)6779-6900

P.T. GETEKA FOUNINDO(Foundry Factory)

JL Pulo Ayang Kav. AA2 Pulogadung
Industrial Estate P.O Box 1160 JAT
Jakarta 13011, Indonesia
Phone: (62)021-460-3963 Fax: (62)021-460-3937

TORISHIMA U.S.A.

U.S.A. OFFICE
82B Daniels Road, Charlton,
MA01507, the United States of America
Phone: (1)866-374-1130 Fax:(1)508-248-9321

TORISHIMA MALAYSIA

TORISHIMA MALAYSIA SDN.BHD
Suite 1906, 19th Floor Kenanga International
Jalan Sultan Ismail 50250 Kuala Lumpur,
Malaysia
Phone: (603)2715-0068 Fax: (603)2715-0019